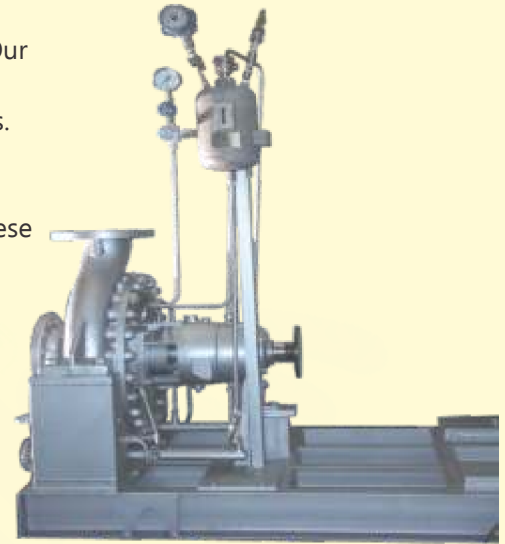


THERMIC FLUID PUMP

APPLICATION

These pumps are normally made from WCB/SS Material which are able to withstand with high Temperature application and hot oil transfer in boiler. Our pumps are suitable for both organic and inorganic fluids and used in oil refineries, food, chemical, textile industries and sea water desalination plants. These pumps are equipped with water/self cooling feature that makes them suitable for the applications in heat transfer plants and handling of organic heat transferring of oils. In compliance with the latest industry standards, these pumps are designed with heavy duty bearings.



OPERATING RANGE

- **Capacity** : up to 250 M³/hr
- **Temperature** : up to 350°C
- **TDH** : up to 95 m
- **Working Pressure** : up to 20 Bars
- **Delivery Size** : up to 100 mm
- **Speed** : 960/1450/2900 rpm.

HORIZONTAL SPLIT CASING PUMP

FEATURES

- Horizontal and vertical Execution and Centre Line Suspension
- Gland Pack / Mechanical Seals
- 3 stage HSC Pump with Head up to 170 mtrs and flow up to 350 m³/hr for Condensed Extraction.
- Bush Bearing arrangement
- Bearing Cooling arrangement
- High head pumps have Double Volute Casing
- Two stage pump-single entry closed type with Impellers Back to Back
- **Capacity up to 18000m³/hr**
- **Head up to 270m**



APPLICATION

1. Water supply
2. Building Services
3. Circulating Water Systems
4. Paper Mills
5. Water / Effluent Treatment
6. Pharmaceuticals
7. Irrigation
8. Sugar Mills
9. Ports and Docks
10. Vegetable Oil Mills
11. Air Conditioning
12. General Industry Requirements
13. Fire fighting

IN-LINE CENTRIFUGAL PUMP

APPLICATION

- "MALHAR" Volute casing IN-LINE centrifugal pumps Type
- RIL are space saving pump units designed for easy installation and used generally for circulating clean non-aggressive fluids.
- Water supply Systems
- Water circulation /Transfer
- Hot water Circulation
- Agriculture
- Industry
- Ship Building
- Cooling Towers
- And many other Applications



OPERATING RANGE

- Horizontal and vertical Execution and Centre
- **Capacity** : up to 280M³/hr
- **Head** : up to 95 mtr
- Higher capacity and available on request
- **Material of Construction** : CI/Bronze/SS Etc.