

FIRE FIGHTING PUMP

OPERATION :

Fire pumps may be powered either by an electric motor or a diesel engine, or, occasionally a steam turbine. If the local building code requires power independent of the local electric power grid, a pump using an electric motor may utilize, when connected via a listed transfer switch, the installation of an emergency generator.

The fire pump starts when the pressure in the fire sprinkler system drops below a threshold. The sprinkler system pressure drops significantly when one or more fire sprinklers are exposed to heat above their design temperature, and opens, releasing water. Alternately, other fire hoses reels or other firefighting connections are opened, causing a pressure drop in the fire fighting main.

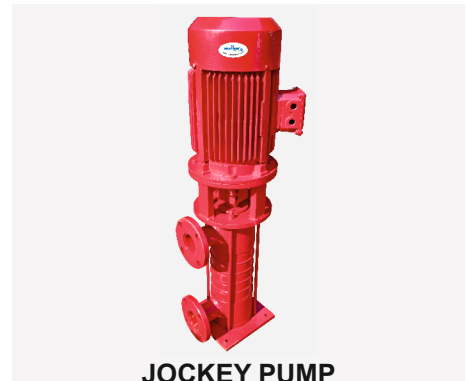
Fire pumps are needed when the local municipal water system cannot provide sufficient pressure to meet the hydraulic design requirements of the fire sprinkler system. This usually occurs if the building is very tall, such as in high-rise buildings, or in systems that require a relatively high terminal pressure at the fire sprinkler in order to provide a large volume of water, such as in storage warehouses.

Fire pumps are also needed if fire protection water supply is provided from a ground level water storage tank.

Types of pumps used for fire service include: horizontal split case, vertical split case, vertical inline, vertical turbine, and end suction.



DIESEL ENGINE PUMP SET



JOCKEY PUMP



MONOBLOCK PUMP



MOTOR DRIVEN PUMP

JOCKEY PUMP :

A jockey pump is a small pump connected to a fire sprinkler system and is intended to maintain pressure in a fire protection piping system to an artificially high level so that the operation of a single fire sprinkler will cause a pressure drop which will be sensed by the fire pump automatic controller, causing the fire pump to start. The jockey pump is essentially a portion of the fire pump's control system.

APPLICATION

- Petroleum, Oil and gas,
- Refineries, various depots / terminals and Installation
- various offshore Installations.
- Hotels, Shopping and Housing complexes all over the country.
- Commercial Complexes
- High rise Buildings
- Airports and ports
- Oil and Gas on shore and off shore platforms
- Power stations and transformer stations
- Petroleum and petrochemical complexes
- Warehouses
- Manufacturing and chemical Industry

RANGE :

Capacity :- 3000 US GPM,

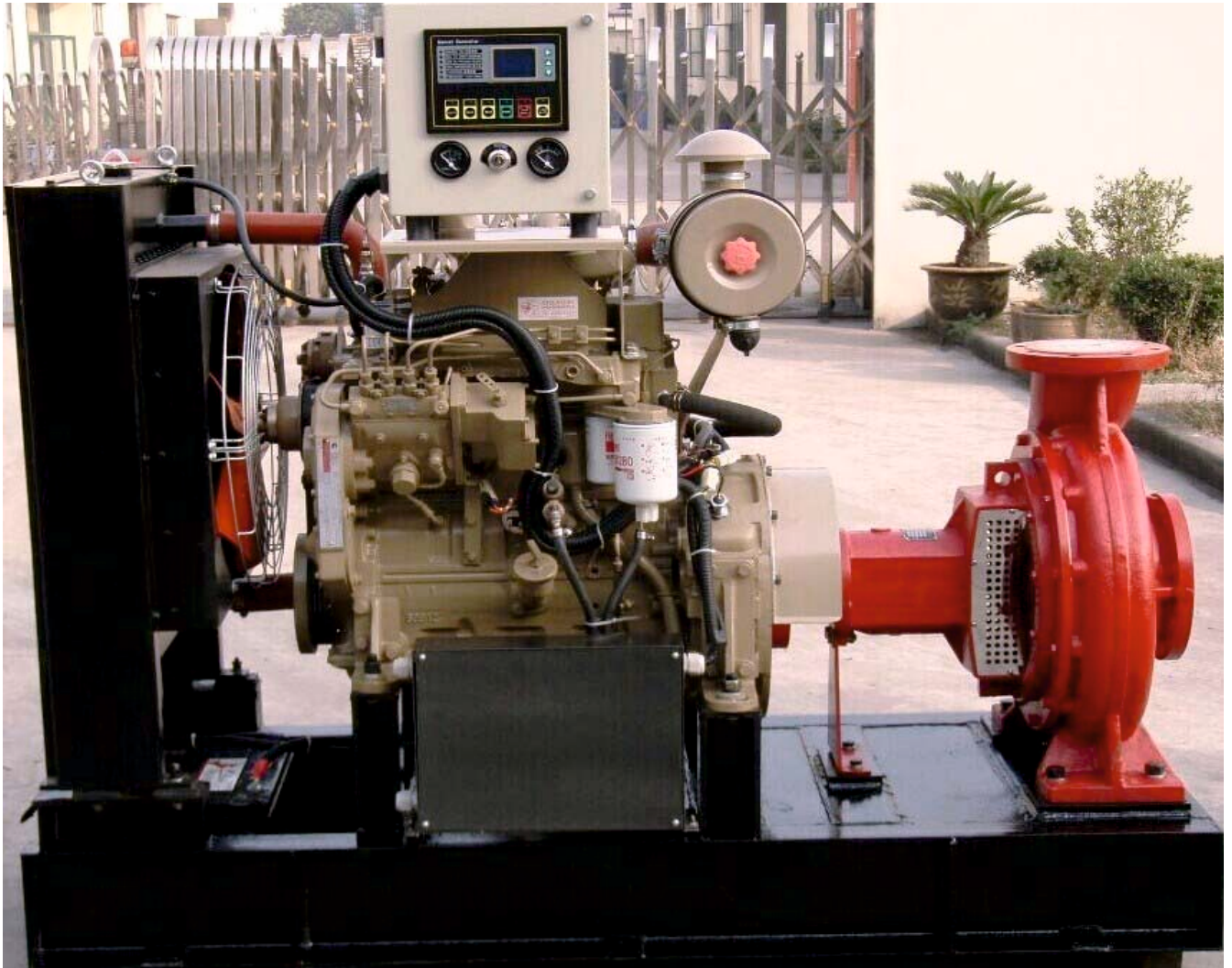
Head :- 348 PSI,

RPM:- AS Per Your Requirement

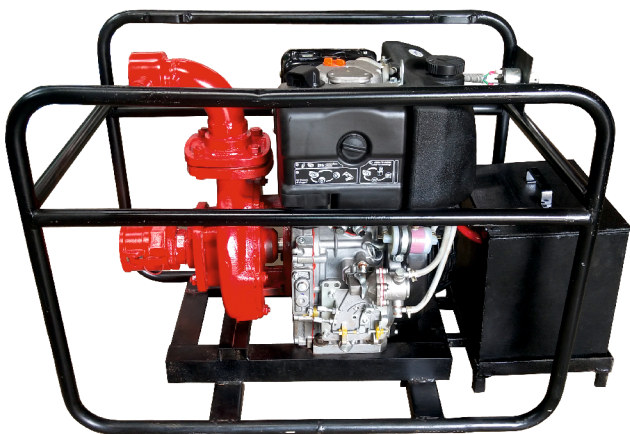
Frequency :- 50 Hz / 60 Hz

In India ,the pump manufacturers generally adhere to the TAC (Tariff Advisory Committee) Guidelines , Although pump manufacturers may also obtain listing with UL OR FM Global.

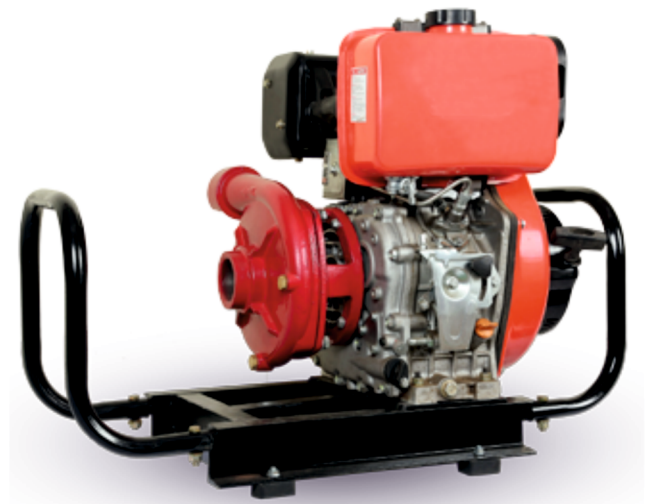
FIRE FIGHTING PUMP



DIESEL ENGINE PUMP SET



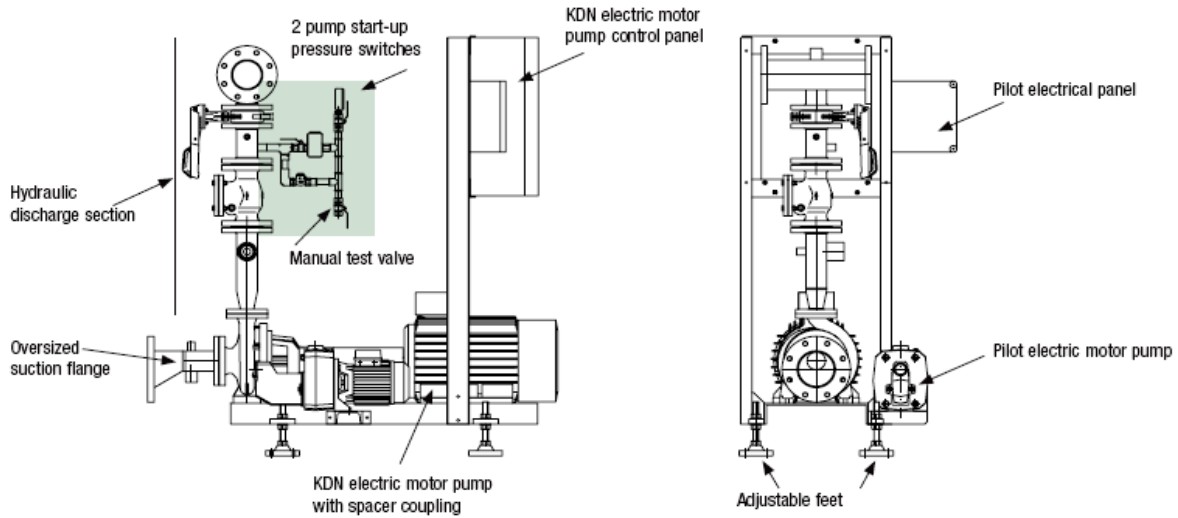
PETROL ENGINE PUMP SET



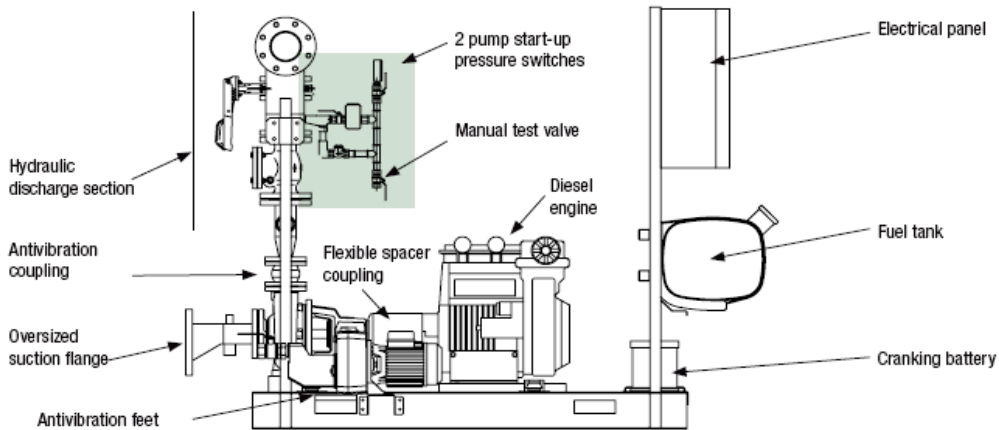
MINI ENGINE PUMP SET

FIRE FIGHTING PUMP

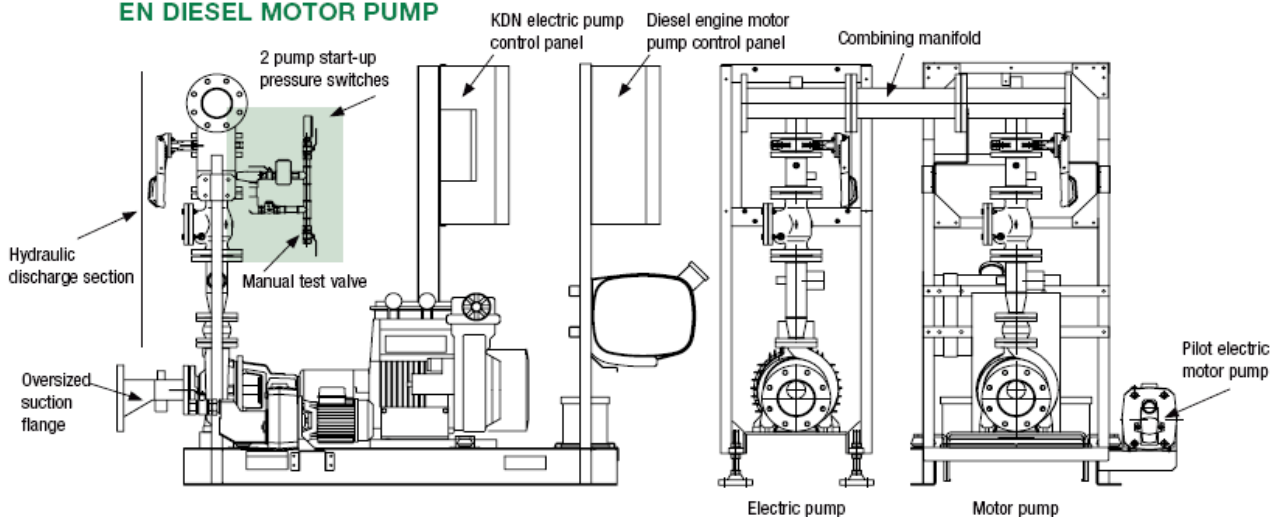
EN ELECTRIC PUMP UNIT



DIESEL ENGINE MOTOR PUMP UNIT



UNIT EN ELECTRIC MOTOR PUMP EN DIESEL MOTOR PUMP



MONOBLOCK PUMP PERFORMANCE TABLE

PUMP MODEL	POWER RATING		PIPE SIZE MM		TOTAL HEAD IN METER															
					6	8	10	12	14	16	18	20	22	24	26	28	30	32	34	36
	KW	HP	SUC	DEL																
MMP-335	2.2	3.0	50	40				5.1	4.95	4.8	4.65	4.5	4.35	4.2	4.0	3.8	3.55	3.2	2.75	2.0

PUMP MODEL	POWER RATING		PIPE SIZE MM		TOTAL HEAD IN METER																	
					18	20	24	28	30	32	36	40	45	48	50	55	60	64	68	72	76	80
	KW	HP	SUC	DEL																		
MMP-550	3.7	5.0	50	40						4.0	3.7	3.2	2.85	2.0								
MMP-855	5.5	7.5	65	50					8.6	8.1	7.5	6.5	5.7	4.5	3.5							
MMP-1068	7.5	10	65	50						7.5	7.1	6.8	6.4	6.0	5.3	4.3	3.0					
MMP-1372	9.3	12.5	65	50							8.0	7.9	7.8	7.6	7.1	6.1	5.6	3.0				
MMP-1576	11.25	15	65	50								8.3	8.0	7.8	7.4	7.0	6.5	5.8	4.5			
MMP-1585	11.25	15	65	50									13.0	12.5	12.0	11.0	10.5	1.0	8.0	5.0	3.0	
MMP-2580	18.5	25	80	65											17.0	16.5	15.0	12.5	10.0	8.0	0.0	
MMP-3085	22.5	30	80	65												17.5	16.5	15.0	12.5	11.0	8.0	0.0
MMP-3068	22.5	30	100	80									27.0	25.5	24.0	21.0	17.0	9.5				

RESPONSIBILITY OF PRODUCT , PERFORMANCE AND SERVICES
 Year of Establishment 1990, Creative Engineers is an offshoot of more than two decade old renowned group "Fair Deal". The company has grown by leaps and bounds. Our's is an ISO-9001 certified organization engaged in manufacturing, and exporting different types of industrial and chemical pumps like horizontal centrifugal pumps, multistage centrifugal pumps, submersible pumps, agricultural water pumps, submersible water pumps, electric motors and impellers which have found applications in different industries like pharmaceutical, chemical, agricultural and irrigation. We are also making pumps as per customer's requirements and deliver pumps within time limit .

Our Quality Certification

