

## MBAL-1 ALUMINIUM BARREL PUMP



Heavy duty industrial grade fuel pumps designed for everyday use in agriculture, construction, automotive & industrial applications.

Rain & weather proof for tough outdoor use.

Compact & light weight construction.

Silenced motor makes almost no noise.

Aluminum filter built into the suction tube inlet prevents contaminants from getting in & causing damage.

**Duty cycle :-** 8 minutes on / 3 minutes off

x **Overall size of pump(L x W x H):-** 1375 x 300 x 140mm

x **Packing size(L x W x H):-** 1470 x 310 x 260 mm

x **Pump weight:-** 8.2 kg

x **Pump weight with packing:-** 12 kg

### Specification :-

x <b>Motor type :-</b>	AC motor
x <b>AC power cable length :-</b>	1.8 meter
x <b>Max. Viscosity of media :-</b>	100 centipoise
x <b>Temperature :-</b>	5°C to 40°C

### Wetted components

Aluminum & Plastic

### Recommended use

Diesel, Kerosene, Bio diesel, DEF, Water based media , Light oils with viscosity upto 100 centipoise.

### Not to use with

Gasoline, Corrosive chemicals, Lacquer thinner, any material that is not compatible with the pump construction

# MBAL-1 ALUMINIUM BARREL PUMP

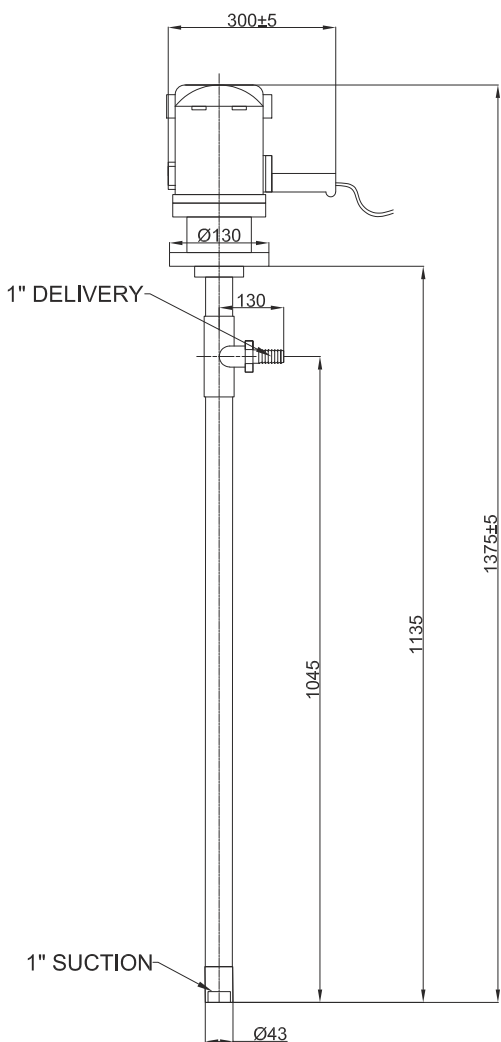
**Description :-**

- x **Inlet pipe diameter :-** Ø43 mm
- x **Outlet size :-** 1" BSP Threaded connection
- x **Power :-** 1hp
- x **Speed :-** 18000 rpm
- x **Voltage :-** 220 volt, 50 hz
- x **Phase :-** Single

**Performance table :-**

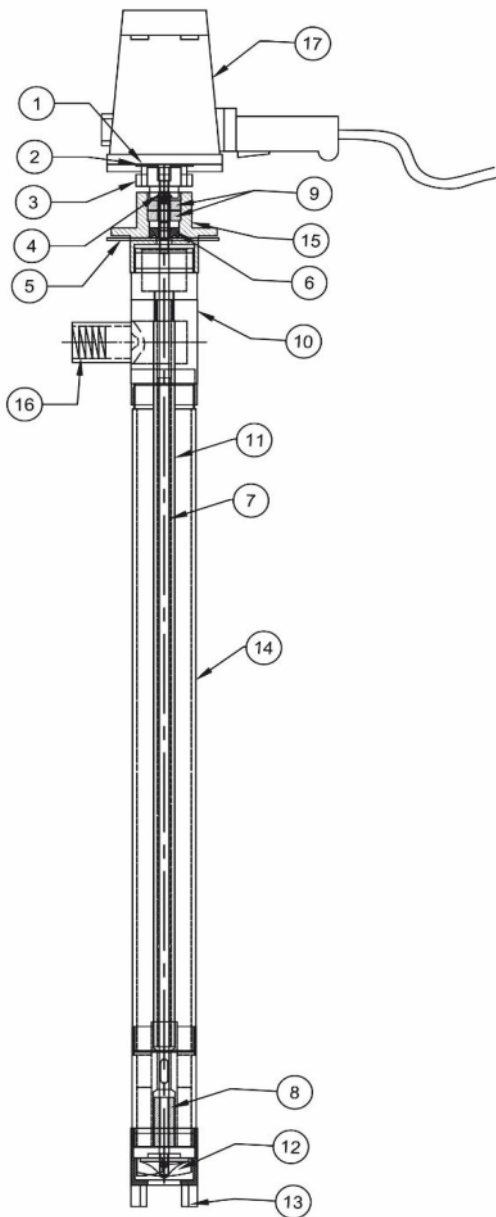
Head	0	5	10	13
Flow in lpm	65.64	38.63	19.84	0
Ampere	3.1	3.1	3	3

**Drawing :-**



## MBAL-1 ALUMINIUM BARREL PUMP

### Cross section drawing



NO.	PART NAME	QTY.	MATERIAL
1	SNAP RING(SMALL)	1	SS
2	COUPLING CROSS	1	SS
3	COUPLING HOUSING	1	CI
4	BEARING SHAFT	1	SS
5	SNAP RING(BIG)	1	SS
6	LIP SEAL	1	TEFLON
7	SHAFT	1	SS
8	BUSH BEARING	1	TEFLON
9	BALL BEARING	2	SS
10	DISCHARGE TEE	1	CI
11	INNER PIPE	1	ALUMINIUM
12	IMPELLER	1	ALUMINIUM
13	PUMP BASE	1	ALUMINIUM
14	OUTER PIPE	1	ALUMINIUM
15	BEARING HOUSING	1	CI
16	OUTLET CONNECTION	1	CI
17	MOTOR	1	-