

## “MP” SERIES

### APPLICATION

### SELF PRIMING CUM CENTRIFUGAL MUD PUMPS

#### Public utilities :

- For pumping muddy water, sewage, polluted liquids, solid and in swimming pool.
- Dewatering Basements, Trenches, Construction sites.
- Onboard shift, as bilge, for desk wash & engine cooling
- Tiles & Marble factories, effluent plants.

#### Mobile Machinery :

- Cooling water for marine engines and shovels.
- Any application where priming is to be avoided.

#### Industry :

- Transfer of clean or dirty neutral, acid or alkali liquids containing sand, mud or solids in suspension; clean or dirty low viscosity petroleum product or solvents; milk of lime, caustic soda; washing, cooling, circulation; smoke scrubbing; emergency duty.

#### Civil engineering :

- Flood drainage; sewage pumping; fire fighting; recovery of dangerous liquids.

#### Naval duty :

- Loading and unloading; bilge pumping; washing, fire fighting, stripping, sanitary duty and circulation.

#### Waste treatment:

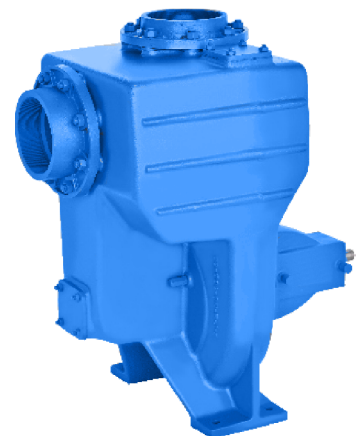
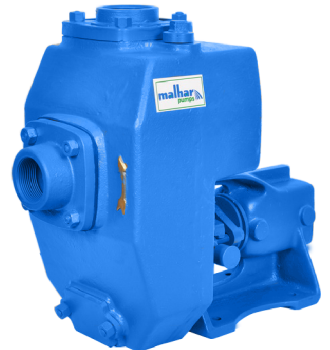
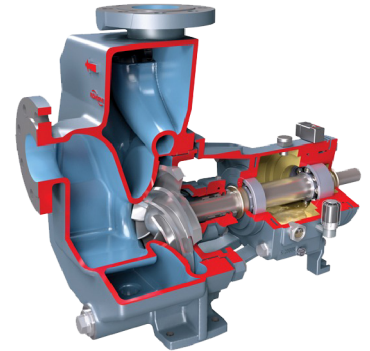
- pumping polluted, hot or corrosive waste water containing sand, mud or solids in suspension; dosing neutralizing liquids; pumping out settled sludge.

#### Construction industry :

- Dewatering excavation, canals or ponds; groundwater dewatering with well point system or drains; water supply from wells or canals; hosing down concrete castings.

#### Agriculture :

- Surface irrigation; liquid manure oxygenation; transfer and spraying liquid manure or fertilizers, distribution of liquid animal feed; transfer of must; washing



### TYPICAL APPLICATION

- Liquid containing sand mud or solids in suspension with PH from 5-13, smoke scrubbing, water emulsion for machine tools or grinders, cutting or quenching fluid circulation, cooling water circulation in steel mills or drawing mills, neutralizing liquid dosage, pumping out settled sludge, sump pumping liquid manure transfer and circulation.
- Water circulation in paint spray booths, stripping fuel tanks circulation Recovery of dirty solvents
- Transfer of light petroleum product such as diesel fuel, paraffin, kerosene and petrol (gasoline)
- Liquid fertilizer transfer, circulation and spraying, brackish or sea water containing sand
- Brackish or sea water washing, cooling or fire fighting in ports, auxiliary duties on board
- Marine duty, brine, sea intake and circulation of sea water in swimming pools
- Pumping out acid waster, transfer, of dilute acids, fruit juice or fluid food products
- Recovery of spills from chemical plant, transfer or circulation of caustic or potash
- At Drilling Rigs

## "MP" SERIES

### FEATURES

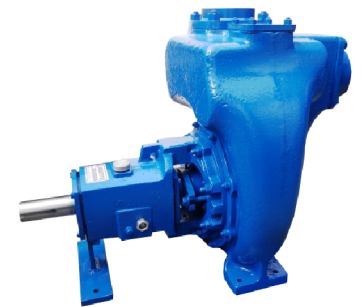
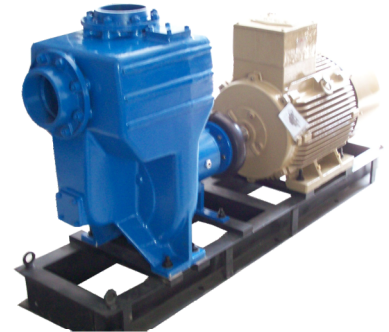
- Excellent, quick, automatic without foot valve up to 8 mtrs.
- Automatic air release during priming.
- Back pull out design, so easy maintenance can be done without disturbing pipe lines.
- Dynamically balanced rotating parts ensure lesser vibrations.
- Better efficiency because of good hydraulic design.
- Minimum parts & fast repairing at low cost, pump is also available at economical rate.
- Available in Bare, Coupled, Monoblock, Belt driven & Engine driven version.
- Also offered pump with trolley / trailer to move it from one place to another.
- Monoblock pumps can withstand with wide voltage fluctuations.
- Less expensive & easily available spares.
- Pumps can be fitted with mechanical seal as per customer's requirements.
- Very simple construction with only two moving parts.
- Easy inspection of impeller.
- Large diameter solids handled. (up to 60 mm)
- High resistance. to abrasive liquids. Wear plates are easily replaced and impellers are also available with ceramic coating

### Easy to install :

only the suction hose is immersed in the liquid. The pump can be set up high and dry in the most convenient position for inspection and maintenance.

### Long Life :

The parts subject to wear can be easily replaced one or more times to restore the original performance.



## WATER RATING CHART

### MONOBLOCK & MOTOR COUPLED

MODEL	MOTOR KW/HP	PIPE SIZE IN MM SUC. DEL.	SPEED IN R.P.M	TOTAL HEAD IN METERS																SOLID HANDLING SIZE MM		
				6	8	10	12	14	15	16	18	19	20	22	24	25	26	28	30		32	34
				DISCHARGE LITERS PER SECOND																		
MP-0	0.75/1.00	40 X 40	2850	4.5	4.0	3.5	2.6	1.4	0.5	-	-	-	-	-	-	-	-	-	-	-	7.0	
MP-1	1.5/2.00	40 X 40	2850	-	-	6.2	5.5	4.8	4.3	3.9	2.7	1.8	0.8	-	-	-	-	-	-	-	8.5	
MP-2	2.20/3.00	50 X 50	2900	-	-	9.2	8.4	8.0	7.7	7.2	6.4	5.9	5.3	4.0	2.5	1.4	-	-	-	-	10.5	
MP-3A	3.70/5.00	80 X 80	2900	-	-	-	-	-	-	-	-	-	10.0	9.2	8.1	7.4	6.7	5.1	3.7	1.8	7.0	
MP-3	5.50/7.50	80 X 80	2900	-	-	-	-	-	-	-	-	-	16.3	16.1	15.4	14.7	13.9	12.4	10.1	7.9	5.4	
MP-3L	3.70/5.00	80 X 80	1450	-	-	18.0	16.3	13.5	11.5	10.0	5.5	-	-	-	-	-	-	-	-	-	15.5	
MP-4LA	7.50/10.00	100X100	1450	-	-	35.9	33.8	31.1	29.9	28.4	23.8	22.4	17.9	11.9	-	-	-	-	-	-	18.5	
MP-4L	9.30/12.5	100X100	1450	-	-	41.4	39.4	36.5	35.2	33.5	30.4	28.2	26.1	21.9	16.9	14.0	10.0	-	-	-	23.0	
MP-6LA	15.0/20.0	150X150	1450	-	-	66.2	63.3	59.7	57.4	54.9	48.7	45.4	42.4	34.1	23.7	-	-	-	-	-	34.0	
MP-6L	18.70/25.00	150X150	1450	-	-	74.9	72.4	68.6	66.1	63.9	58.4	54.9	51.9	44.9	33.9	27.4	20.0	-	-	-	40.0	

Performance Chart																
PUMP MODEL	MOTOR RATING		PIPE SIZE		IMPELLER DIA(MM)	TOTAL HEAD IN METERS								SOLID SIZE (MM)	RATED SPEED (RMP)	
	KW	HP	SUC	DEL		22	24	28	32	36	40	44	46			47
	CAPACITY IN PER SECOND															
MP-3HH	7.5	10	80	80	194		19	18	16.5	12.5	8.5	4.5	2	14.5	2900	

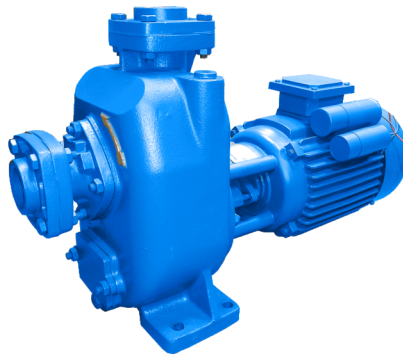
• Performance are at 2900 / 1450 rpm , 50 / 60 Hz and tested with clear Water.

• Due to Constant R & D activity , details are subject to change without prior Notice.

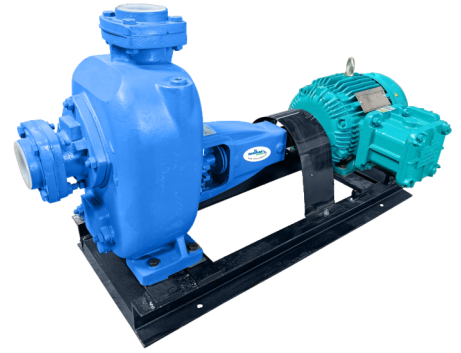
MODEL	MOTOR KW/HP	PIPE SIZE IN MM SUC. DEL.	SPEED IN R.P.M	TOTAL HEAD IN METERS																SOLID HANDLING SIZE MM			
				6	8	10	12	14	15	16	18	19	20	22	24	25	26	28	30		32	34	36
				DISCHARGE LITERS PER SECOND																			
MP-3L	4.0/6.0	80 X 80	1500	-	-	-	17.1	15.0	13.5	11.9	8.1	5.4	3.1	-	-	-	-	-	-	-	15.5		
MP-3L	9.0/12.0	80 X 80	1800	-	-	-	-	22.0	21.5	20.1	19.3	18.4	16.1	13.2	11.5	9.5	5.4	-	-	-	15.5		
MP-4LA	9.0/12.0	100 X 100	1500	-	-	-	35.7	33.2	32.0	30.6	27.7	26.1	24.4	20.9	16.6	14.0	10.9	-	-	-	18.5		
MP-4L	10.5/14.0	100 X 100	1500	-	-	-	39.8	28.4	37.5	35.5	33.4	31.8	30.0	25.8	21.0	17.9	15.4	9.2	-	-	23.0		
MP-6LA	16.5/22.0	150 X 150	1500	-	-	67.5	65.6	62.5	61.5	58.6	53.0	51.1	47.4	40.4	32.2	27.8	22.0	-	-	-	34.0		
MP-6L	19.5/26.0	150 X 150	1500	-	-	76.8	73.8	71.4	70.2	67.5	62.2	56.3	50.1	41.4	37.7	31.4	-	-	-	-	40.0		



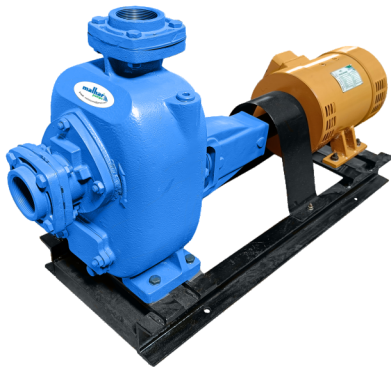
**BARE MUD PUMP**



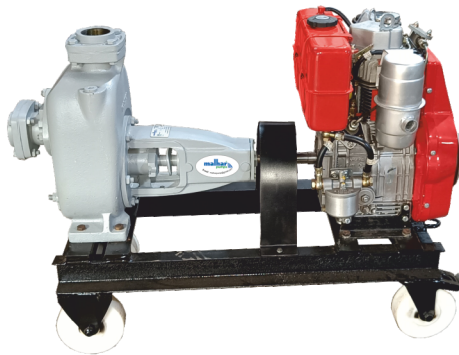
**MONOBLOCK MUD PUMP**



**BARE PUMP WITH FLP MOTOR  
MUD PUMP**



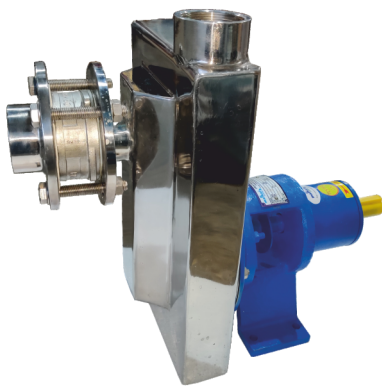
**BARE MUD PUMP WITH  
DC MOTOR**



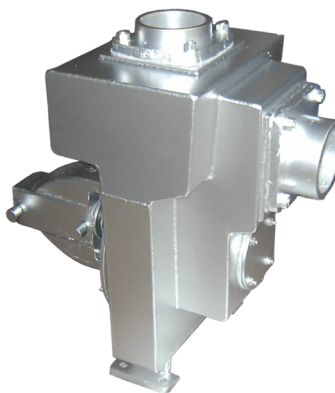
**S.S BARE PUMP WITH 5HP  
3600RPM DIESEL ENGINE**



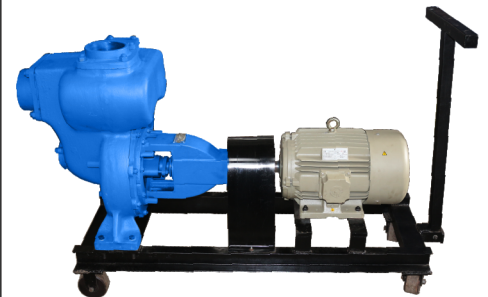
**MP-6L BARE MUD PUMP  
WITH ENGINE**



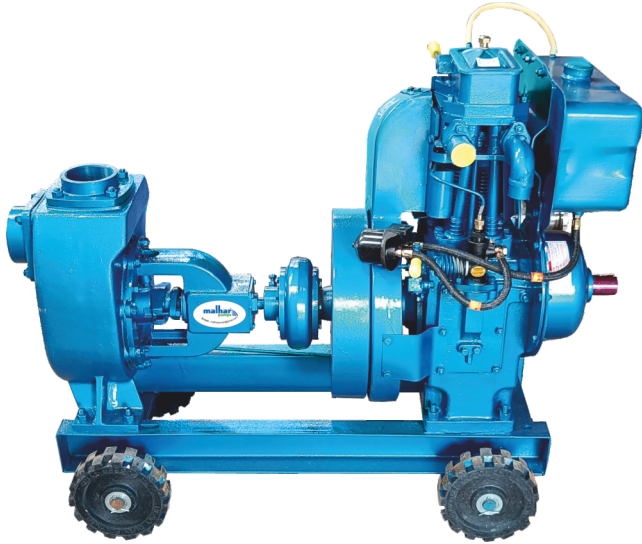
**S.S FABRICATED  
BARE MUD PUMP**



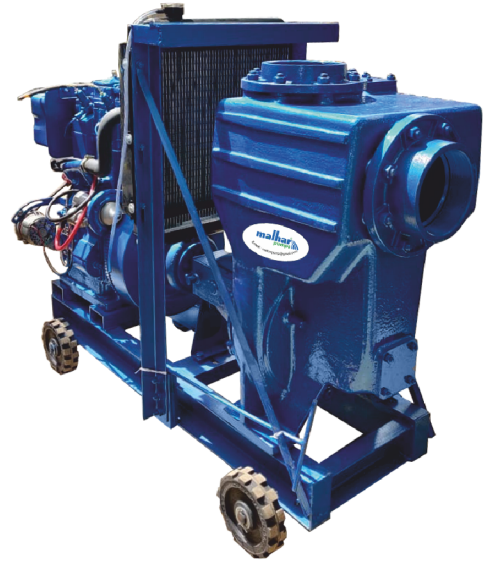
**S.S FABRICATED HIGH HEAD  
BARE MUD PUMP**



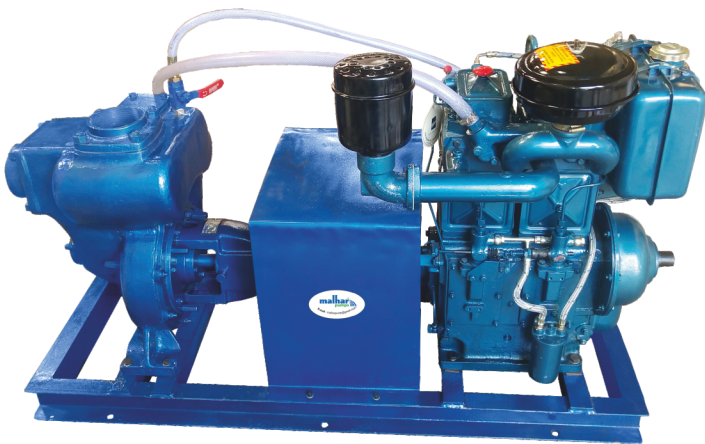
**BARE PUMP WITH MOTOR AND  
BASE FRAME TROLLEY**



**MP-3L NEW BARE PUMP WITH  
6.5HP 1450RPM MESSY ENGINE**



**MP-6L BARE PUMP WITH  
25HP ENGINE**



**MP-4L BARE PUMP WITH  
12.5HP ENGINE**



**MP-3HH BARE PUMP WITH  
16HP 1400RPM ENGINE**

Video Link : <https://www.youtube.com/watch?v=OVCnv9exjYY&t=1s>  
<https://www.youtube.com/watch?v=jYIA3vz-fFY>