



Model	Voltage	Speed	Max.Flow	Max.Head	Power		Outlet	Guide Rial
	V	r.p.m	m ³ /h	m	KW	HP	inch	Fitting
50WQD10-7-0.75TM/QG	220	2850	14	14	0.75	1	2"	50-50
50WQ10-7-0.75TM/QG	380	2850	14	14	0.75	1	2"	50-50
50WQD10-10-1.1TM/QG	220	2850	16	17	1.1	1.5	2"	50-50
50WQ10-10-1.1TM/QG	380	2850	16	17	1.1	1.5	2"	50-50
50WQD15-9-1.1T/QG	220	2850	28	14	1.1	1.5	2"	50-40
50WQ15-9-1.1T/QG	380	2850	28	14	1.1	1.5	2"	50-40
50WQ25-9-1.5T/QG	380	2850	32	16	1.5	2	2"	50-40
80WQ40-6-1.5T/QG	380	2850	48	17	1.5	2	3"	80-65
50WQ25-13-2.2T/QG	380	2850	37	20	2.2	3	2"	50-40
80WQ40-9-2.2T/QG	380	2850	56	21	2.2	3	3"	80-65
80WQ40-12-3T/QG	380	2850	68	21	3	4	3"	80-65
80WQ50-13-4T/QG	380	2850	76	25	4	5.5	3"	80-65

Application



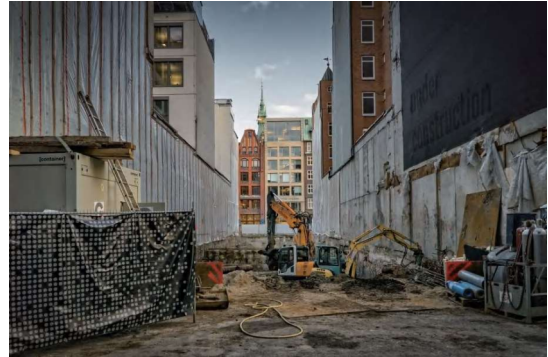
Textile industry



Spinning factory



Poultry Farm



Construction site



Wastewater Treatment



Aquaculture



Residential quarters



Industrial plants

Information

Motor

- Copper winding
- Insulation class: F
- Ingress protection: IPX8
- Running mode: S1

Specification

- Current available with :220V/50HZ; 380V/50HZ
- Other specification is under develop stage

Pump

- Liquid density $\leq 1.2 \times 10^3 \text{kg/m}^3$
- Liquid temperature: 0-40°C
- Liquid PH value: 4-10
- Immersion Depth: 0-5m
- All electrophoresis casting parts
- Optional float switch for single phase models

Cable Length

- Standard with 10m
- Optional length according to the application demand



Connector

Cutting set

Models with "M"



Models without "M"



Standard

Optional

Cutting

Cutting ability



Fiber

E.g Towels, Gloves, Stockings, ect.



Plastic

E.g Rope, Storage bags, ect.



Pads

E.G Diapers, Sanitary napkin, ect.



Hair & wipes

E.G Paper, bath Garbage, ect.

For example

Before



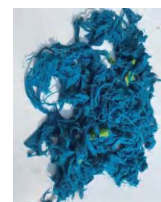
After



Before



After



Cutting video

Remark

- This product cannot be used to transport liquids containing hard particles, such as sand, gravel, metal shavings, stones, glass, etc.
- This product cannot be used to transport liquids containing much mud.
- There will be a drop in head and flow when change solids content.

